

**We Come From Metal
But We Offer More Than Metal**

Add: Room 906, 990 Anling Road, Huli District, Xiamen City
Contact: Chen Zhihao
(Tel): +86 186 3369 9291



EVERGREEN
Solar Mounting Solutions

About Us



EG Solar (the abbreviation for Evergreen Solar) is a high-tech enterprise specializing in the development, design and construction of power station, and the design, production and sales of solar mounting structures. The company is headquartered in Xiamen and has production and manufacturing bases in Nantong, Yangzhou and Tianjin. The group companies consist of: Jiangsu Evergreen Solar New Energy Technology Co., Ltd., Nantong YTON Traffic Equipment Technology Co., Ltd., Nantong Tonwide International Trade Co., Ltd., Evergreen Solar New Energy (Singapore) Pte Ltd, Evergreen Solar New Energy (Germany) GmbH.

EG Solar is committed to providing comprehensive and efficient solar photovoltaic solutions and products to customers around the world. Currently we have the construction license and power station design license, our annual production capacity of aluminum alloy brackets is 20,000 tons, and carbon steel brackets is 120,000 tons. The company has obtained ISO management system certification, and the products have been certified by many professional certification agencies such as CE and SGS.

Our products cover distributed roof, steel and aluminum ground, carports and BIPV products, etc., which are widely used in residential, commercial and industrial fields. We have many years of service experience and successful cases, and we constantly strive to improve and innovate to better meet the safety, convenience and economy required for solar system installation.

We always insist on being customer-centric, providing customers with the highest quality services and the most competitive solutions, so that customers can get better user experience and business success.

EG Solar looks forward to cooperating with you, let us work together to create a better tomorrow!

Qualifications >

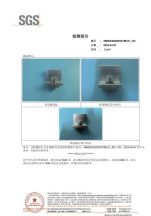
Attestation of Conformity



ISO Management System



SGS Test Report



< Production



Our Business >

01/ Develop Solar project

We have a professional development team that can customize the development and design of solar projects based on different customer needs, including ground-mounted solar power stations, distributed solar power stations, and rooftop solar projects, etc.

02/ Contract Solar project construction

We have the general contractor qualification and undertake the design and construction of solar projects. We're able to comprehensively consider the market demand, technical level, investment scale and other factors to achieve the economic and technical feasibility of the project. Post-project evaluation and experience summary will be conducted after completion to continuously improve the project management level and technical level.

03/ Manufacture Solar mounting structures

We have our own production base and can produce various types of photovoltaic brackets, covering distributed roof, ground, carport and BIPV products. We have three major material production lines: aluminum alloy, carbon steel, zinc-aluminum-magnesium.

04/ Design Solar power plant

We have a design team with rich professional knowledge and experience, who can plan and design the solar power generation system by comprehensively considering the environment and resource conditions of the photovoltaic power station, as well as the safety and economy of the system.

< Our Values

Rich Products

Diverse Material

High
Productivity

Professional
Service



Rich Products

We can provide various types of photovoltaic brackets according to customer needs, including distributed roofs, ground, carports and BIPV products, etc., with rich product lines and experience.

Diverse Material

We have three major material production lines: aluminum alloy, carbon steel, zinc-aluminum-magnesium, which can meet the needs of different customers and provide a variety of material choices.



High Productivity

We have efficient automated production lines and a professional production team to ensure production efficiency and product quality.

Professional Service

We have a professional technical and service team that can provide customers with a full range of technical support and after-sales services to meet their changing needs. We always respond to customer quickly and present solutions as soon as possible within 48 hours to ensure that you get timely help. On the premise of ensuring quality of our products or services, we provide you with a warranty period of up to 10 years and provide you with continuous service life guarantee within 25 years.



Global Business



02 /

About Us

04 /

Qualifications
Production

06 /

Our Business
Our Values

08 /

Global Business
Contents

10 /

Project Reference

12 /

Tile Roof Mount
Hook Options

14 /

Railless Roof Mount
Universal Type



16 /

Hanger Bolt Mount

18 /

Kliplok Mount
Tilt Mount

20 /

Ballast Mount

22 /

Balcony Mount

24 /

Steel Carport
Aluminum Carport

26 /

C Steel Mount
U Steel Mount

28 /

Aluminum Mount

CONTENTS

Project Reference >



2022 | China North 30MW



2023 | China North 50MW



2023 | China South 10MW



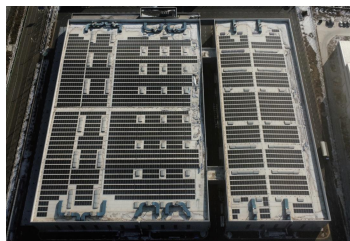
2023 | China South 2MW



2023 | China North 5MW



2023 | China South 400KW Carport

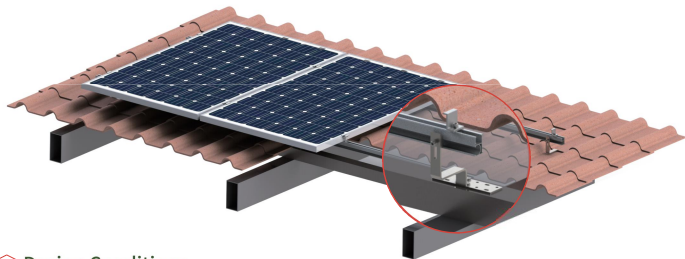


2023 | China North 2MW TPO Roof



2024 | China South 30MW

Tile Roof Mount >



Design Conditions

Application Area:	Pantile Roof
Module Type:	Framed
Module Orientation:	Portrait/Landscape
Main Material:	Anodized AL6005-T5
Fasteners:	SUS304/410
Features:	Adjustable & Easy installation
Warranty:	10 Years Warranty and 25 Years Service Life



Hook



Mid Clamp



End Clamp



Rail

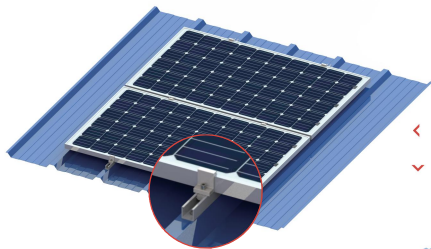


Rail Splice

< Hook Options

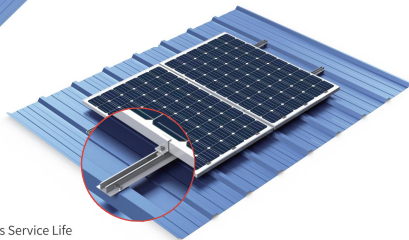
Type	Image	Type	Image
SS Hook 1		SS Hook 6	
SS Hook 2		SS Hook 7	
SS Hook 3		SS Hook 8	
SS Hook 4		Alu Adjustable Hook	
SS Hook 5			

Railless Roof Mount >



< Railless Roof Mount-Landscape

> Railless Roof Mount-Portrait



Design Conditions

Application Area: Trapezoidal, Sandwich Roof
 Module Type: Framed
 Main Material: Anodized AL6005-T5
 Fasteners: SUS304/410
 Features: Easy & Fast installation
 Warranty: 10 Years Warranty and 25 Years Service Life



Mini Rail-Portrait



Mini Rail-Landscape

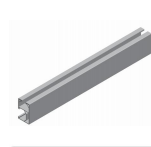


End Clamp



Mid Clamp

< Universal Type



Rail



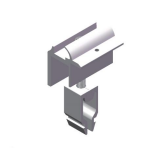
Rail Black



Mini Rail



Mini Rail Black



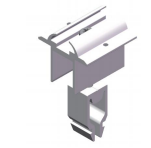
Universal End Clamp



Universal End Clamp
-Top Black



Universal End Clamp
-All Black



Universal Mid Clamp

Features

- * Easily locked by just pressing the clamp in
- * Adaptable to module thickness of 30~40mm
- * Made of AL6005-T5 also can be black anodized
- * Rapid installation

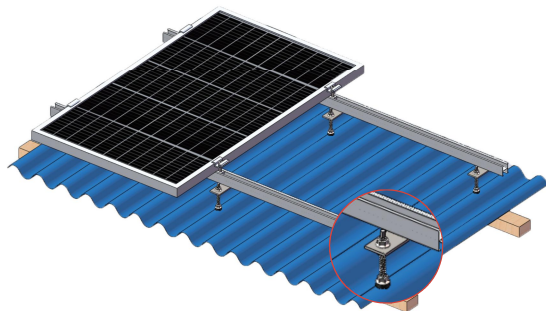


Universal Mid Clamp
-Top Black



Universal Mid Clamp
-All Black

Hanger Bolt Mount >



Flexible Combination



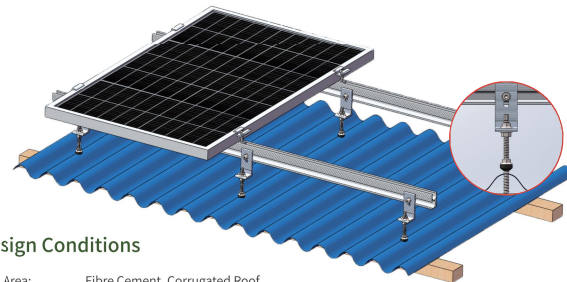
Hanger Bolt & Alu Plate



Hanger Bolt & L Foot

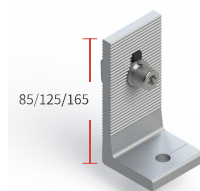


L-Foot (with ST6.3*80 screw)



Design Conditions

Application Area:	Fibre Cement, Corrugated Roof
Module Type:	Framed
Module Orientation:	Portrait/Landscape
Main Material:	Anodized AL6005-T5
Fasteners:	SUS304/410
Features:	Adjustable & Easy installation
Warranty:	10 Years Warranty and 25 Years Service Life



Optional Heights <

Cutting drill point
for steel purlin



- SUS410/Carbon Steel -

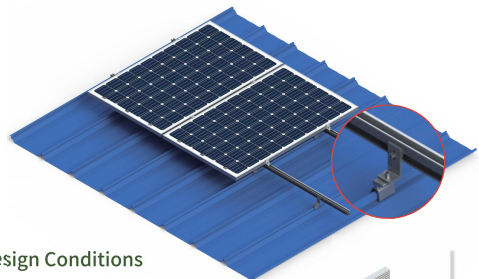
- SUS304 -



Point
for wooden rafter

Screw Option <

Kliplok Mount >



Design Conditions

Application Area:	Standing Seam Metal
Module Type:	Framed
Module Orientation:	Portrait
Main Material:	Anodized AL6005-T5
Fasteners:	SUS304/410
Features:	Non-penetrating & Easy installation
Warranty:	10 Years Warranty and 25 Years Service Life



L-Foot



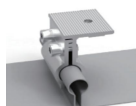
End Clamp



Rail



Rail Splice

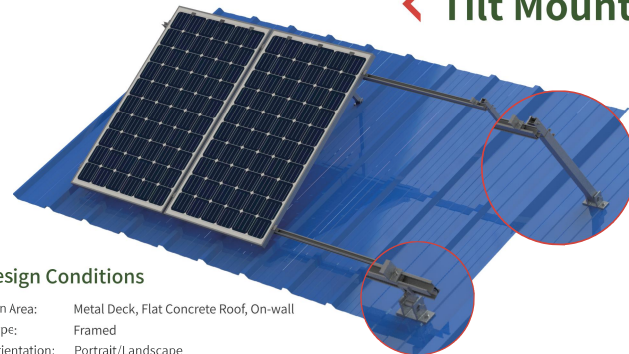


Standing Seam Clamp



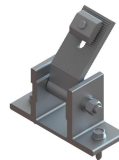
Mid Clamp

< Tilt Mount



Design Conditions

Application Area:	Metal Deck, Flat Concrete Roof, On-wall
Module Type:	Framed
Module Orientation:	Portrait/Landscape
Main Material:	Anodized AL6005-T5
Fasteners:	SUS304
Features:	Flexible tilt & direction
Warranty:	10 Years Warranty and 25 Years Service Life

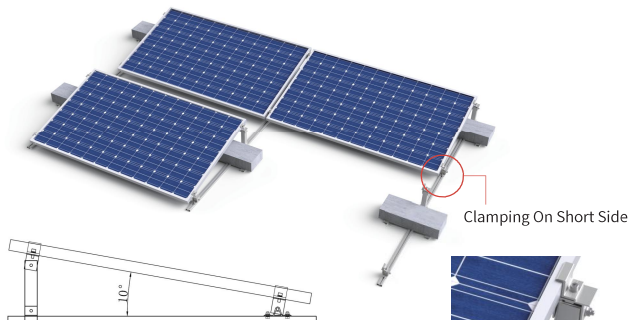


Front Leg



Rear Leg

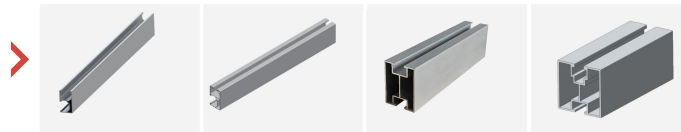
Ballast Mount >



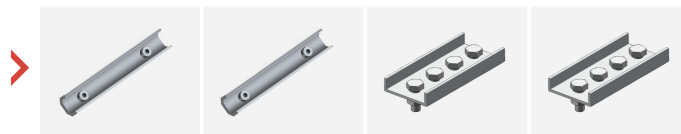
- The angle can be slightly adjusted between 10-12°.
- Bigger tilt can also be easily achieved by lengthening the rear leg without requirement of new mould.



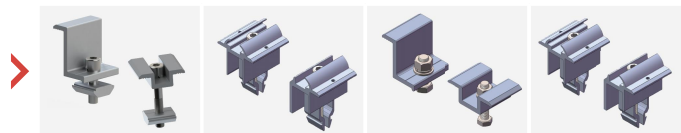
< Regular Components



Rail



Rail Splice

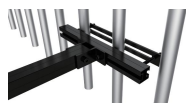


Mid & End Clamp

Balcony Mount >



• Adjustable at panel back



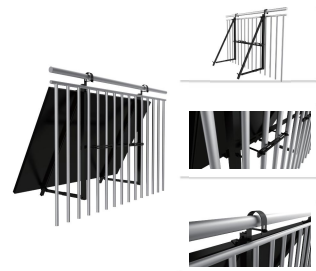
Design Conditions

Application Area:	Garden, Balcony, Railing and Wall	Main Material:	Anodized AL6005-T5
Module Type:	Framed	Fasteners:	SUS304
Module Orientation:	1 Panel Landscape	Features:	Easy installation & Adaptable to various scenarios
Module Length(mm):	≤2400mm	Warranty:	10 Years Warranty and 25 Years Service Life
Module Width(mm):	≤1400mm		
Module Thickness(mm):	30-50mm		

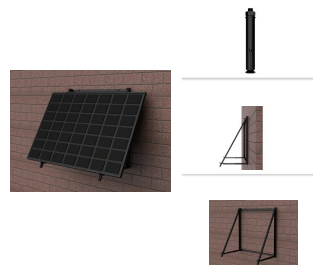
• Garden



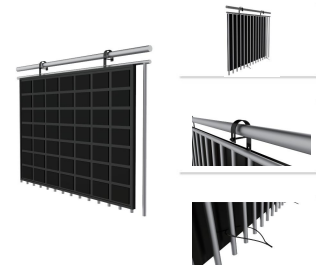
• Three-in-One



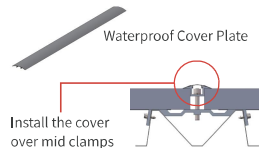
• On-wall



• 0° Hanging



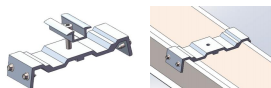
Steel Carport



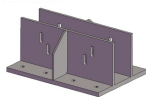
Design Conditions

Application Area:	Parking lots
Module Type:	Framed
Module Orientation:	Portrait/Landscape
Main Material:	Q235B/S350GD
Fasteners:	SUS304/410
Water-proof:	Optional
Features:	Easy transportation & Cost-effective
Warranty:	10 Years Warranty and 25 Years Service Life

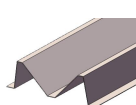
Clamp with fixing plate on water channel



Beam/Column/Purlin



Welded Base Plate



Vertical Water Channel



Tie Bar

Aluminum Carport



End Clamp



Big H Connector

Design Conditions

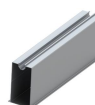
Application Area:	Parking lots
Module Type:	Framed
Module Orientation:	Portrait/Landscape
Main Material:	Anodized AL6005-T5
Fasteners:	SUS304/410
Water-proof:	Optional
Features:	Light wight & Easy installation
Warranty:	10 Years Warranty and 25 Years Service Life



Base Connector



Column



Rail-Portrait



Beam

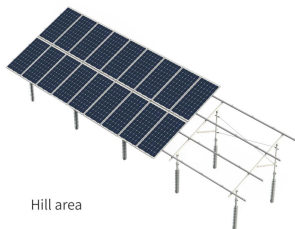
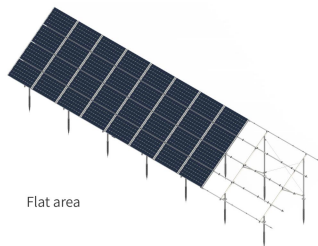


Small H Connector



Mid Clamp

C Steel Mount >



Design Conditions

Application Area: Open Ground
 Module Type: Framed
 Module Orientation: Portrait/Landscape
 Main Material: Q235B/S350GD
 Fasteners: Steel, SUS304
 Features: Cost-effective & Easy installation
 Warranty: 10 Years Warranty and 25 Years Service Life



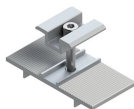
End Clamp Kits



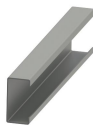
L Foot Connector



Ground Screw



Mid Clamp Kits



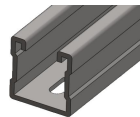
C-section Steel



Purlin Connector

Design Conditions

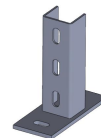
Application Area: RCC Roof or Open Ground
 Application Area: Concrete or Ground Screw
 Module Type: Framed
 Module Orientation: Portrait/Landscape
 Main Material: Q235B/S350GD
 Fasteners: Steel, SUS304
 Features: Flexible application & Cost-effective
 Warranty: 10 Years Warranty and 25 Years Service Life



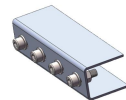
U-section Steel



Triangle Connector



Base Connector



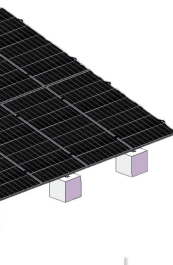
Purlin Connector



End Clamp



Mid Clamp



< U Steel Mount

Aluminum Mount >



Design Conditions

Application Area:	Open Ground
Foundation:	Concrete or Ground Screw
Module Type:	Framed
Module Orientation:	Portrait/Landscape
Main Material:	Anodized AL6005-T5
Fasteners:	SUS304
Features:	Light weight & Recyclable
Warranty:	10 Years Warranty and 25 Years Service Life



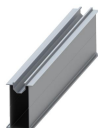
End Clamp



Rail Splice



Rail Clamp



Rail-Landscape



Base Connector



Mid Clamp



Beam



Column

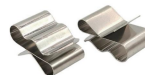
< Accessories

Ground Screw

Dimension:	76* $T3/3.5$
Flange Diameter:	200mm
Length:	1200/1400/1600/1800/2000mm
Material:	HDG Q235B
· customization available ·	



PV Cable Clip



2*4mmsq



4*6mmsq

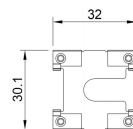


4*4mmsq

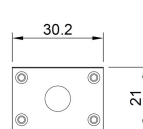


Grounding Lug

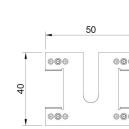
Grounding Clip



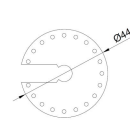
EG-GC-01



EG-GC-03



EG-GC-07



EG-GC-08